

WSC CAPITAL CAMPAIGN  
**FOR FUTURE GENERATIONS**











# Our Responsibility:

## For future generations of skaters

### **Wissahickon Skating Club (WSC) is one of a handful of member-owned skating clubs in North America.**

Since its founding in 1954, WSC has always been a “family club”—families have always dominated the membership and defined the programs and atmosphere. The Club takes great pride in its passionate membership, its quality programs, and details such as earning the reputation for having the best ice and learn-to-skate programs in the Philadelphia area.

### **Wissahickon has always fostered talented skaters while retaining its heritage.**

Figure skating members, past and present, have competed at the highest levels both nationally and internationally, while scores of hockey players have gone on to play at the collegiate level, and, in two cases, in the NHL.

### **The Palestra of hockey.**

Recently, a parent was overheard to say, “this is cool... it’s like the Palestra of hockey!”

Indeed it is! However, the need for renovation has far surpassed the rink’s “old time” distinction—while the spirit of the club remains true to its heritage, the physical plant is in desperate need of renovation.

### **Our ice is on borrowed time.**

Wissahickon’s ice and ice-surface-making equipment are as old as the club. While WSC has been blessed with caring and effective stewardship of its ice for more than 60 years (the life expectancy of the equipment was 25 to 30 years) we are clearly operating on borrowed time...

Should the rink’s systems fail catastrophically, it is likely that the club would not be able to recover from such a disaster.

So, to preserve the club for future generations, its Board of Directors has decided to move forward with the target of replacing the ice surface infrastructure.







# The Opportunity:

## Bring WSC into the 21st century

**In addition to the ice, most everything else in the club dates back to the 50s too.**

With the ice renovation, we have the opportunity to make needed improvements to the club's facilities:

- Improve the public bathrooms and make them ADA accessible
- Install an ADA compliant lift to the second floor
- Repair and/or replace outdated wiring, plumbing, lighting and heating

- Add a needed sixth locker room and renovate the existing locker and changing facilities
- Create a more effective layout of the club's facilities to improve the overall experience for its membership and visitors

The byproduct of these efforts would be new mechanical and electrical equipment that is more energy-efficient—saving annual operating costs going forward—and implementing needed updates to keep the club safe, efficient and competitive for the future.

**For more than six decades, members and their families have learned to skate and learned to love skating on WSC's ice.**

If the necessary improvements are not made soon, the opportunity for future generations will be in jeopardy.

For those of us who love the club, "Wiss" means something special to us and our families, something unique and special and our lives would be different without it. For all who have shared in its traditions and understand its unique value, we must bear the responsibility to preserve the Club, not just for our families and ourselves, but for coming generations who will carry these traditions into the future.



*The Club's Board of Directors has authorized the formation of a Steering Committee to complete the planning of the reconstruction and direct a capital campaign to raise the necessary funding.*







# The Project

*Members and staff have been working for more than a year on how to go about the reconstruction and establishing a budget. Early funding is in place to pay for architects and engineers. A contingency fee of 3% has been included on appropriate demolition and construction estimates.*

## Phase I—Replace the Ice System

To replace the ice system, the Club will need to replace the ice surface and all of the mechanical ice-making equipment, replace the boards and glass, and upgrade the electrical service. Prior to the ice construction phase, maintenance on the roof girders and ceiling will be accomplished and new LED lighting installed. Listed below are the specific items in the scope of this work.

- Remove and replace all ice surface pipes and refrigeration equipment
- Remove and replace all boards, glass, surrounding flooring
- Excavate as necessary
- Upgrade electrical system related to the rink
- Perform interior roof maintenance and lighting replacement
- Employ design and engineering services
- Repave parking lot

**Total Estimated Cost: \$1,500,000**

## Phase II—Interior Improvements

Interior improvements will be made to areas not replaced in Phase 2. Following are the items included in the scope for this phase:

- ADA Upgrades (Public restroom improvements and elevator lift)
- Additional locker room
- Front door/vestibule and relocation of offices
- Players bench relocation to opposite side
- Relocation of skate rental
- Relocation and addition to storage
- Changing room and locker room upgrades

**Total Estimated Cost: \$2,000,000**

## Schedule

The project is expected to start in May of 2017 and end in September 2018.

---

### July 2017

- Renovate roof trusses and install new led lighting system

### Project completed

---

### March 2019 to September 2019

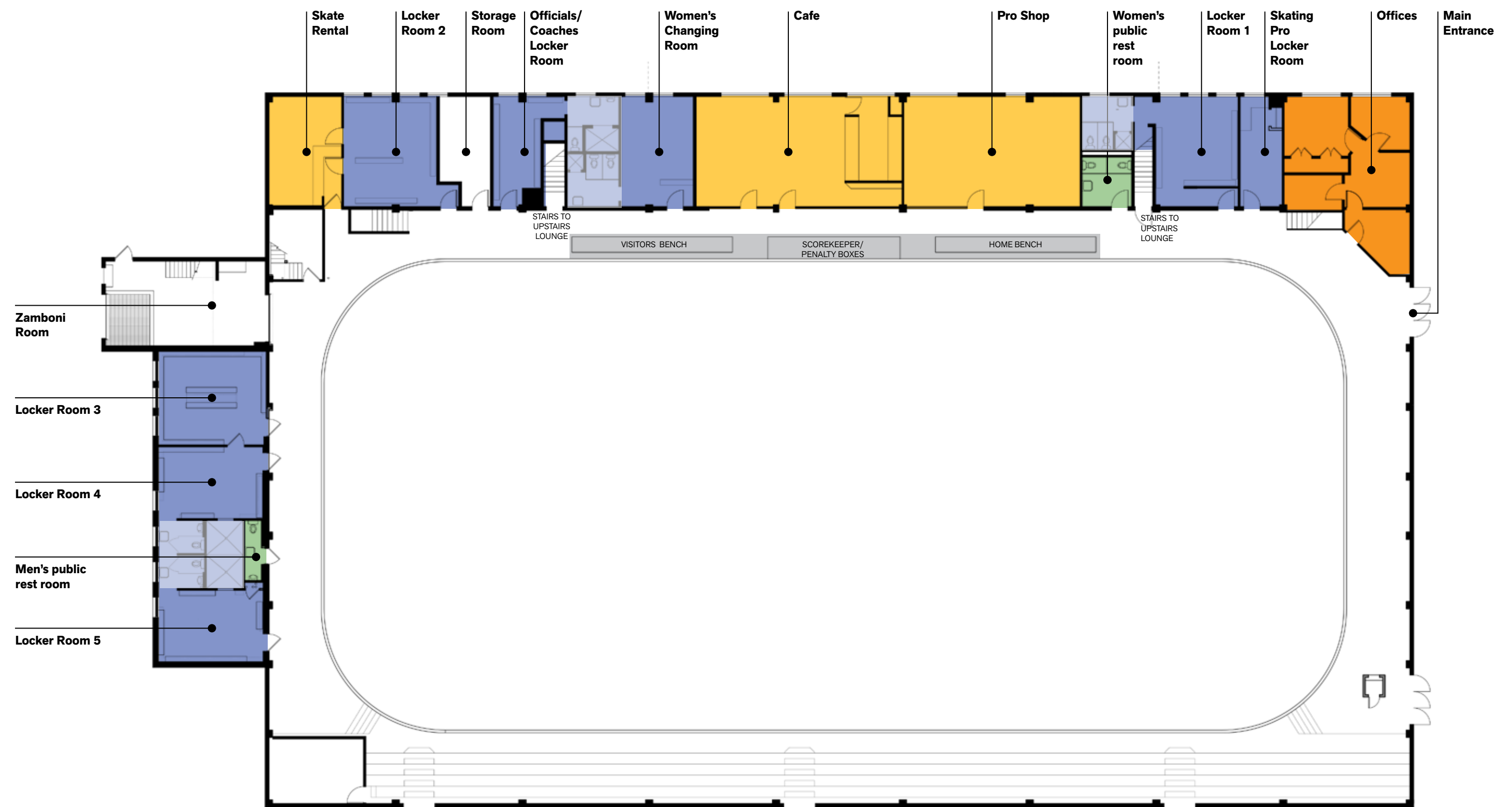
- Phase I—Replace the ice system

---

### March 2019 to September 2019

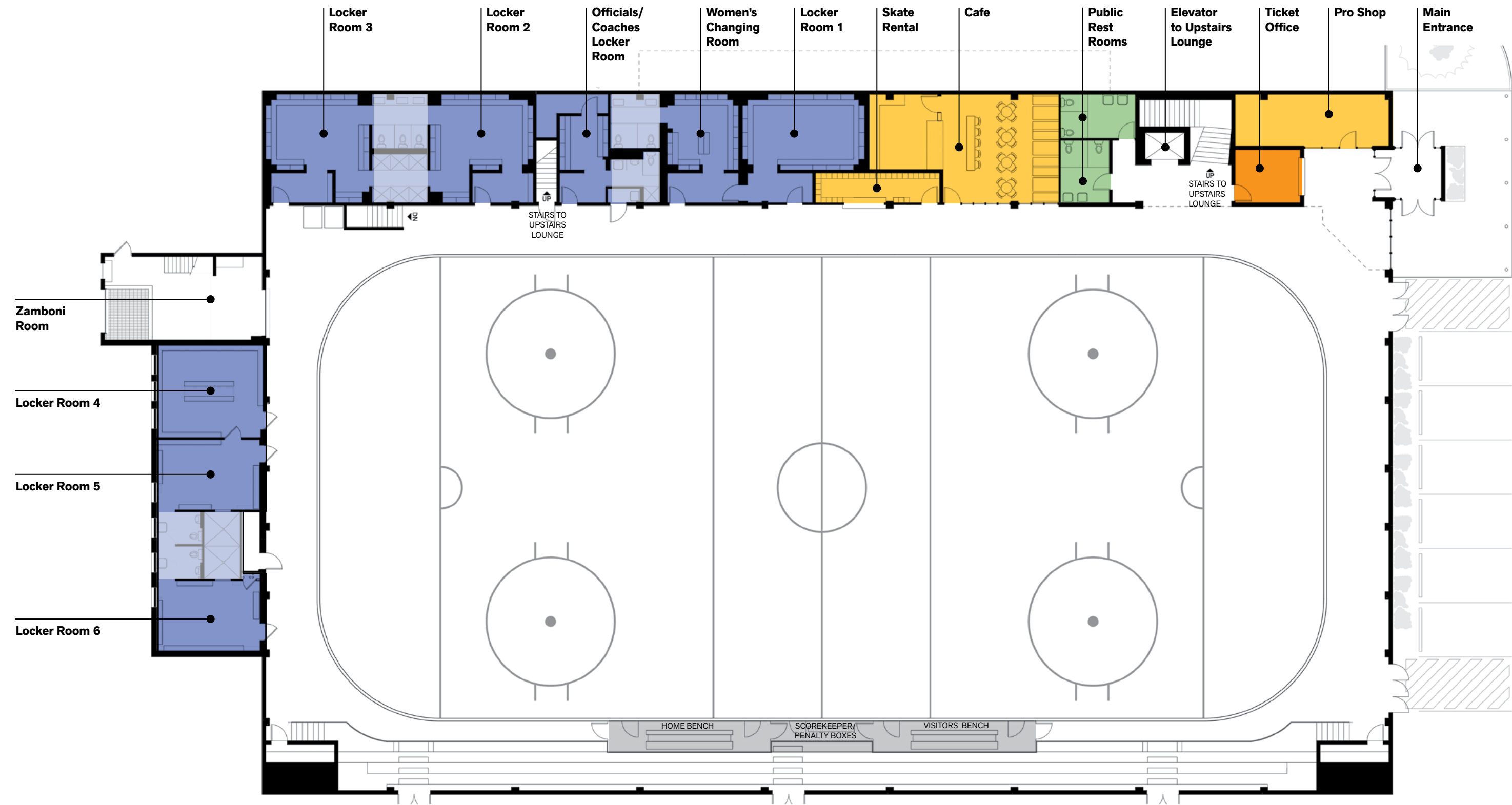
- Phase II—Interior improvements

Existing Conditions Ground Floor



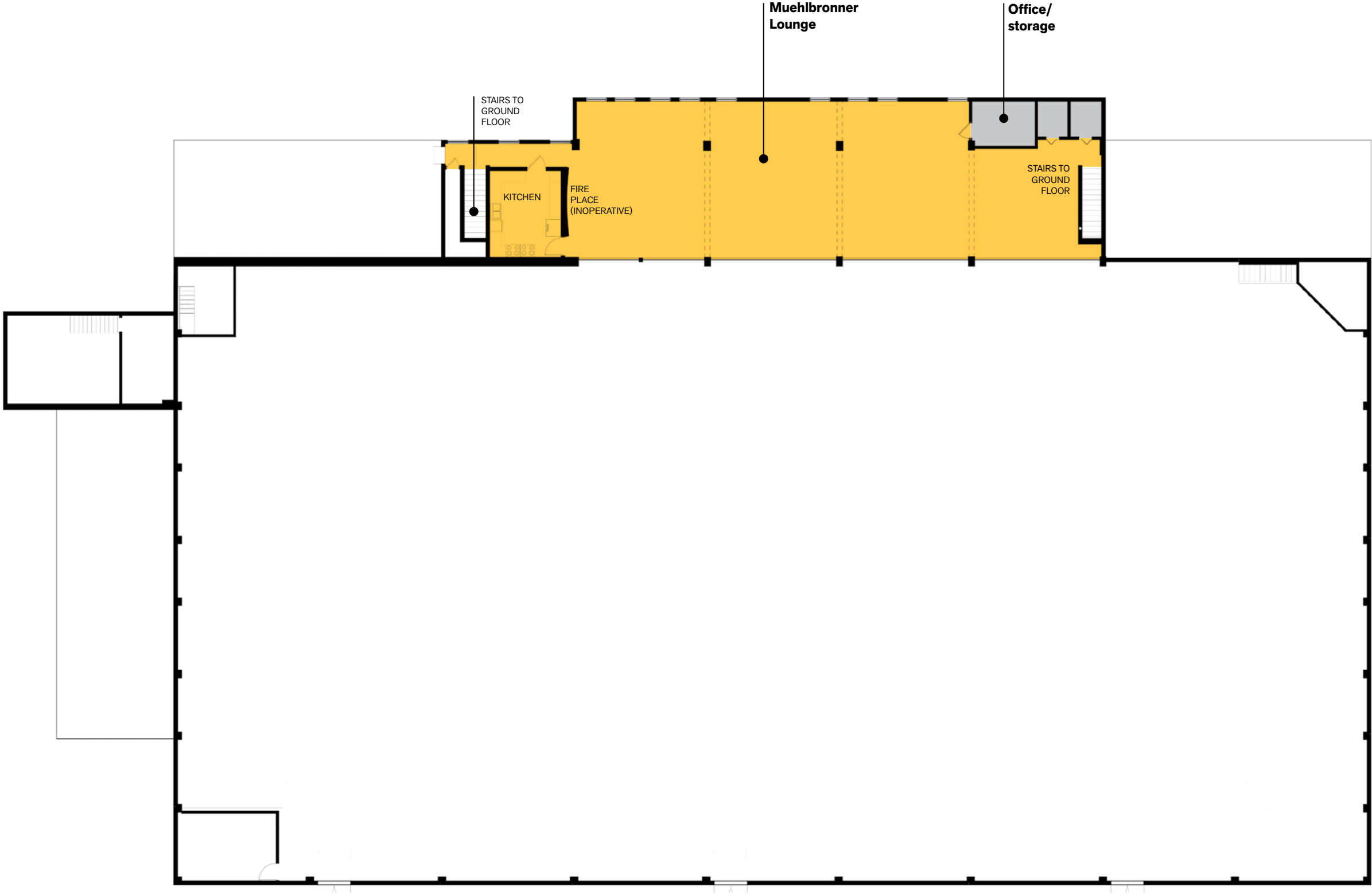


Renovation Scheme Ground Floor



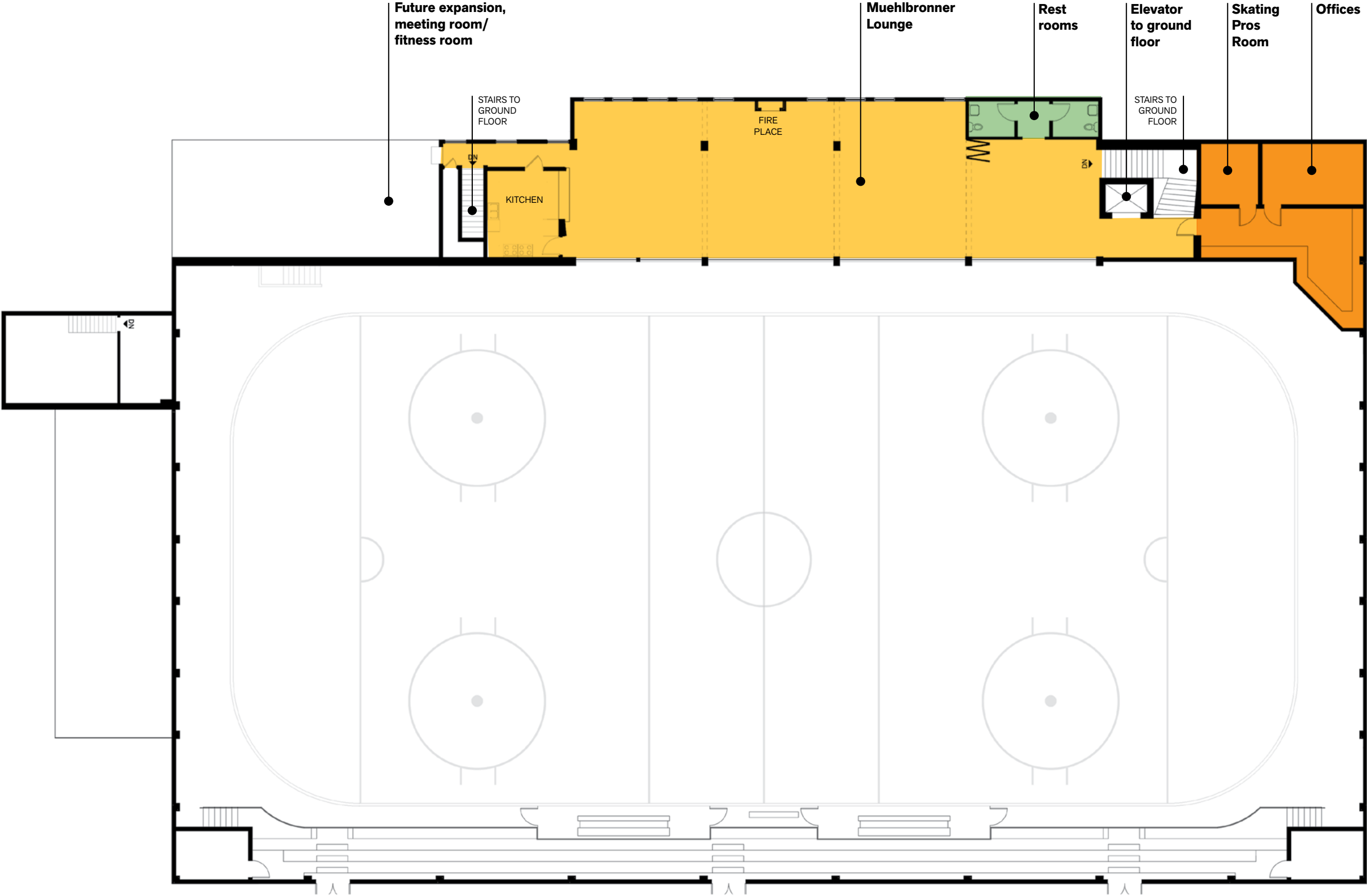


Existing Conditions Second Floor






Renovation Scheme Second Floor







*“The Wissahickon Skating Club by and large has always been a ‘Family’ Club. You may not have a family when you join as a young adult, but when your family comes along, you will long remember and come to treasure what the word ‘Family Club’ means.”*

*— Jerry Quill, whose family and grandchildren have come to love, treasure and fervently support The Wissahickon Skating Club since 1968, 13 years after the Club was founded.*





RENDERING OF PROPOSED NEW PLAYER BENCHES



# Invest in the Future— Make Your Gift Today

## WSC Capital Campaign Steering Committee

Jon Buehler  
Jennifer Fayocavitz  
Denise Fitzpatrick  
Kevin Hamel  
Rod Henkels  
Craig Johnson  
Rich Podulka  
Jerry Quill  
Jeff Rexford  
Tim Woolley

We invite you to join us in ensuring that the Wissahickon Skating Club continues to serve the needs of our community by promoting the skills and life lessons that skating offers. With the support of generous donors like you, we can:

- Ensure that our facilities will attract skaters of all ages and abilities, from young children and families to competitive athletes
- Protect and preserve the unique traditions and shared values of the Club
- Invest in the future of skating by attracting new skaters
- Secure this valued community asset for the next generation

**You** can be part of Wissahickon Skating Club's history... Thank you for your gift!

*The Wissahickon Skating Club is a nonprofit organization pursuant to Section 501(c)3 of the Internal Revenue Code. Your donation to the Club is tax-deductible in accordance with federal and/or state income tax laws.*

